

Jeopardy: Choose from topics 1-3

Topic 1

Topic 2

Topic 3

Topic 4

Topic 5

\$100

\$100

\$100

\$100

\$100

\$200

\$200

\$200

\$200

\$200

\$300

\$300

\$300

\$300

\$300

\$400

\$400

\$400

\$400

\$400

\$500

\$500

\$500

\$500

\$500

Final Jeopardy

1 - \$100

- What word means particles 'hit' each other?

- Collisions



1 - \$200

- What is special about an 'exothermic' reaction?
- Energy is released to the surroundings
- gets hotter



1 - \$300

- What is special about an 'endothermic reaction'?
- Energy is taken in from the surroundings
- gets colder



1 - \$400

- Name 3 factors that increase rate of reaction

- Surface area (powdered)
- increasing temperature
- increasing concentration
- Catalyst



1 - \$500

- $\text{CaCO}_3 (s) \rightarrow \text{CaO} (s) + \text{CO}_2 (g)$
- This chemical reaction is carried out in a beaker. Explain why the mass of the beaker decreases as the reaction happens
- The gas carbon dioxide is produced that escapes from the beaker



2 - \$100

■ The state symbol (g) means

■ gas



2 - \$200

Do exothermic or endothermic reactions show an increase in rate of reaction as the reaction goes on?

- exothermic
- the reaction releases heat



2 - \$300

- Carbon dioxide is a _____ that causes global warming
- Greenhouse gas



2 - \$400

- The state symbol (s) means

- solid



2 - \$500

- What effect does increasing temperature have on the rate of reaction? Explain your answer using these keywords: particle, collision, energy
- Increasing temperature increases rate of reaction
- Particles have more kinetic (movement) energy
- They move faster
- There are more frequent and successful collisions



3 - \$100

- The state symbol (l) means
- liquid



3 - \$200

- The state symbol (aq) means
 - aqueous
 - dissolved in water



3 - \$300

- The rate of reaction is calculated by dividing the _____ by the _____
- Dividing product produced by time



3 - \$400

- Increasing temperature increases rate of reaction because...
- Particles have more energy
- Particles move faster
- There are more successful collisions per second



3 - \$500

- Turning a lump into powder increases rate of reaction because...
- There is a larger surface area
- There are more successful collisions per second



4 - \$100

- True or false – crude oil can be used to make plastics

- True



4 - \$200

- True or false – crude oil can be used to make medicines

- True



4 - \$300

- Petrol burns completely to produce what two products?

- Carbon dioxide and water



4 - \$400

- One advantage of petrol over diesel is that is very f_____
- flammable



4 - \$500

- Crude oil takes millions of years to form and so is n_____ r_____
- Non-renewable



5 - \$100

- What is significant about the elements carbon and hydrogen?
- They are found in fossil fuels



5 - \$200

- Acid rain is caused by burning which fossil fuel?

- Coal



5 - \$300

■ The gas that causes acid rain is s_____ d_____

■ Sulphur dioxide



5 - \$400

- How have countries like Norway used the money made from selling fossil fuels?
- To provide a multi \$billion investment for future generations when their oil runs out and they have no more to sell



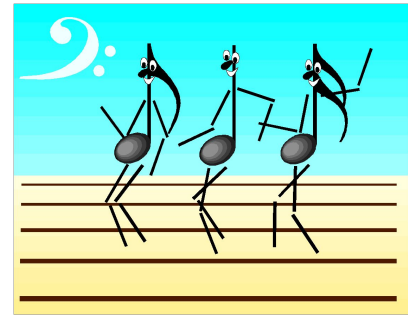
5 - \$500

– Crude oil is turned into a _____ that are used to make plastics

■ Alkenes



Final Jeopardy



- Type question to appear here

- Type answer to appear with a mouse-click here

